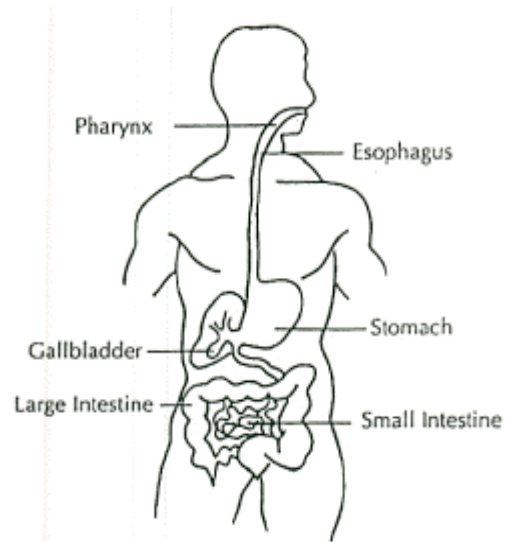


Your Fistulogram

WHAT IS A FISTULOGRAM?

A fistula is an abnormal passage within body tissue. Usually, a fistula connects two organs inside your body that are not normally connected. A fistula may also lead from an internal organ inside the body to the surface outside.

A fistulogram is an x-ray examination of this abnormal passage. X-ray contrast material (x-ray dye) is injected into the fistula so that it will show up on x-ray pictures.



WHY AM I HAVING THIS EXAM?

Your doctor has scheduled you for a fistulogram because you have some symptom that may be related to an abnormal passage in your body. There are many types of fistulas. For example, there may be a fistula between the vagina and bladder or vagina and rectum. There may be an abnormal connection between the stomach or bowel and the outside wall of your abdomen. If you are having abnormal drainage of body fluids, a fistulogram may show where the drainage is coming from or going to. Ask your doctor to explain more about what your problem may be. Please let someone know if you may be pregnant; x-rays may harm an unborn child.

HOW DO I GET READY FOR MY FISTULOGRAM?

There is usually no special preparation for this exam. You may want to bring a sweater and something to read or handwork to do while you wait.

WHAT WILL HAPPEN IN THE X-RAY ROOM?

You will be asked to put on a hospital gown.

You will be assisted onto a special x-ray table. The x-ray staff and doctor will explain more about your fistulogram. They can answer any questions you have.

If your doctor thinks you have a fistula to your rectum, the technologist will place a special enema tip into your rectum. The doctor will inject contrast material (either barium or a clear dye with iodine) into your rectum. You may feel like you need to have a bowel movement. It is important that you hold the enema tip and the contrast material inside until the x-ray is completed. It may help to take slow deep breaths.

If you have a fistula to the outside of your body, the doctor or technologist will place a small tube into the opening. Contrast material will be injected into the tube, and x-rays will be taken to show where the passageway goes inside your body.

You may be asked to move into different positions on the x-ray table. When each x-ray is taken you will be asked to hold your breath and remain as still as possible.

WHAT DO I DO AFTER MY FISTULOGRAM?

After the exam, you can return to your normal activities. If you have any leakage of contrast material outside your body, the x-ray staff will provide you with a bandage or padding to keep you dry .

HOW LONG DOES THE EXAM TAKE?

Including waiting time, your visit for a fistulogram will take about one hour. Please understand that you may have to wait a few minutes during your x-ray while the films are being checked. It is important that the films have all the needed information.

The information on this Website is provided for general informational purposes only and **SHOULD NOT** be relied upon as a substitute for sound professional medical advice, evaluation or care from your physician or other qualified healthcare provider. If you have a medical problem or a health-related question, consult your physician or call Health On-Call at 336-716-2255 or 1-800-446-2255.

Copyright: Wake Forest University School of Medicine / Wake Forest University Baptist Medical Center
Division of Radiologic Sciences
All rights reserved.
Medical Center Boulevard
Winston-Salem, NC 27157
(336) 716-5053