

Your Enteroclysis

WHAT IS AN ENTEROCLYSIS?

An enteroclysis is an x-ray of your small intestine (small bowel). The small bowel cannot be seen well without the use of a substance called barium. Barium is a thick white liquid that coats the bowel so it can be seen on x-ray pictures. You will swallow a thin tube that will go into your small bowel. Then barium will be pushed into your bowel through the tube.

WHY AM I HAVING AN ENTEROCLYSIS?

Your doctor has scheduled you for an enteroclysis because you have some symptom that may be related to your small bowel. The symptoms might be abdominal pain, nausea, vomiting, or diarrhea. Normally, the small bowel is seen after a patient drinks several cups of barium over a period of 1-4 hours. Because you don't feel well, you may not be able to drink enough barium to see the entire small bowel.

Enteroclysis is a way to get the study done more quickly without having to drink or taste the barium. Please let someone know if you may be pregnant; x-rays may harm an unborn child.

HOW DO I GET READY FOR MY ENTEROCLYSIS?

You should not eat or drink anything after midnight until the x-ray is completed.

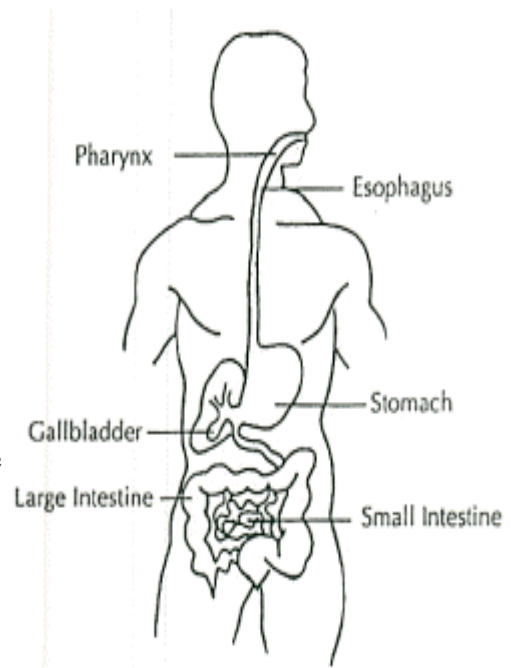
If you have had any type of barium x-ray within 4 days of this exam, you will need to take a laxative to get rid of the old barium. Your doctor will order a laxative for you.

You may want to bring a sweater and something to read or handwork to do while you wait.

WHAT WILL HAPPEN IN THE X-RAY ROOM?

You will be asked to put on a hospital gown.

You will swallow a long thin tube. The technologist will put one end of the tube in your mouth and get it started down your esophagus (swallowing tube). When the tube touches the back of your throat you may gag for a few seconds. The gagging should stop quickly as the tube is passed further into your stomach. The technologist can gently push the tube for you or you can do it yourself. The tube may need to be moved in and out slightly. Staff will watch the x-ray monitor until the tube is positioned in the proper place.



Then the other end of the tube will be hooked to a bag of barium that will flow slowly into your bowel. As your bowel begins to fill with barium, you may feel some fullness inside. You should not have nausea since the barium is not filling the stomach.

You will be asked to move into different positions. When each x-ray is taken you will be asked to hold your breath and remain as still as possible.

Sometimes, part of the x-ray machine may press on your abdomen in order to get better pictures. Tell someone if this is uncomfortable. We want to make you as comfortable as possible.

WHAT DO I DO AFTER MY ENTEROCLYSIS?

For the first 1-2 days after the x-ray, your bowel movements may appear white and chalky .This is normal. Ask your doctor if you should take a laxative and drink extra liquids to help clean out the barium and prevent constipation.

HOW LONG DOES THE EXAM TAKE?

Including waiting time, your visit for an enteroclysis will take about one hour. Please understand that you may have to wait a few minutes during your x-ray while the films are being checked. It is important that the films contain all the necessary information.

The information on this Website is provided for general informational purposes only and **SHOULD NOT** be relied upon as a substitute for sound professional medical advice, evaluation or care from your physician or other qualified healthcare provider. If you have a medical problem or a health-related question, consult your physician or call Health On-Call at 336-716-2255 or 1-800-446-2255.

Copyright: Wake Forest University School of Medicine / Wake Forest University Baptist Medical Center
Division of Radiologic Sciences
All rights reserved.
Medical Center Boulevard
Winston-Salem, NC 27157
(336) 716-5053