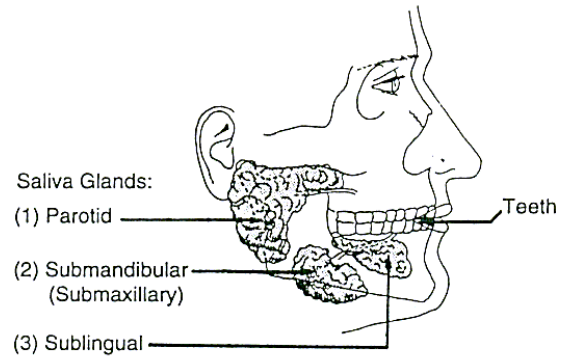


Your Sialogram

WHAT IS A SIALOGRAM?

A sialogram is an x-ray of the salivary glands in your mouth. Most saliva is released into your mouth by three pairs of salivary glands. This exam looks at the largest pair called the parotid glands. These are located inside your mouth below your ear. Glands cannot be seen without the use of contrast material (x-ray dye). The contrast material is injected through a small tube which is inserted into each gland.



WHY AM I HAVING A SIALOGRAM?

Your doctor has scheduled you for a sialogram because you have some symptom that may be related to a blocked salivary gland. This symptom may be pain or swelling in your mouth. This x-ray gives your doctor information that may help in your diagnosis and treatment. Please let someone know if you may be pregnant; x-ray may harm an unborn child.

HOW DO I GET READY FOR MY SIALOGRAM?

There is no special preparation for this exam. You may want to bring a sweater or something to read or handwork to do while you wait.

WHAT WILL HAPPEN IN THE X-RAY ROOM?

You will be asked to put on a hospital gown.

You will be assisted to a sitting position on the x-ray table. The x-ray table will be in an upright position and you will sit on a seat that can be moved up and down. The x-ray staff and doctor will explain more about your sialogram. They can answer any questions you have.

The doctor will ask you to open your mouth wide so a very small tube can be placed gently in the opening of the gland near the back of your mouth. Once the tube is in the proper position, you may be asked to hold the tube in place while the doctor injects a small amount of contrast material. The contrast material fills the salivary gland and makes it show up on x-ray pictures. As pictures are taken you may be asked to turn your head in different positions and to hold your breath.

After all pictures are taken and examined, the small tube will be taken out.

WHAT DO I DO AFTER MY SIALOGRAM?

The x-ray contrast material will drain into your mouth. It may have a bitter taste. You can spit into a basin. If you swallow some of the contrast material, it will not harm you. After your exam, you can return to your normal diet and activities.

HOW LONG DOES THE EXAM TAKE?

Including waiting time, your sialogram will take about one hour. Please understand that you may have to wait a few minutes during your x-ray while the films are being checked. It is important that the films contain all the necessary information.

The information on this Website is provided for general informational purposes only and **SHOULD NOT** be relied upon as a substitute for sound professional medical advice, evaluation or care from your physician or other qualified healthcare provider. If you have a medical problem or a health-related question, consult your physician or call Health On-Call at 336-716-2255 or 1-800-446-2255.

Copyright: Wake Forest University School of Medicine / Wake Forest University Baptist Medical Center
Division of Radiologic Sciences
All rights reserved.
Medical Center Boulevard
Winston-Salem, NC 27157
(336) 716-5053