

WFUHS

PURSUIT

Office of Research

ADMINISTRATION 64548

ANIMAL CARE AND USE

COMMITTEE (ACUC) 63532

CONFLICT OF INTEREST

COMMITTEE 62382

GRANTS ADMINISTRATION
62382

INDUSTRY RELATIONS 69359

INSTITUTIONAL REVIEW BOARD
(IRB) 63532

INTRAMURAL RESEARCH

SUPPORT COMMITTEE (IRSC)
60780

MONITORING AND OVERSIGHT

64548

RESEARCH SUPPORT CORE

RSCORE@WFUBMC.EDU

ANIMAL RESOURCES PROGRAM

BOWMAN GRAY CAMPUS
37394

FRIEDBERG CAMPUS 61620

DOWNTOWN CAMPUS 31171

ENVIRONMENTAL HEALTH AND
SAFETY 69374

Welcome to the new electronic version of the Office of Research's Pursuit newsletter! "Going electronic" allows us greater flexibility and gives Pursuit a much-needed facelift, with more graphics, color and embedded links for readers' convenience. For those who aren't quite ready to "go paperless," please print out the issue and read it at your convenience.

In addition to the new look and format of Pursuit, the staff of the Research Support Core (RSC) will increase its contribution to Pursuit starting with this issue. Look for new columns and topics to be introduced in future issues, which will be produced quarterly. The Pursuit team is listed on the back page of this issue.

What hasn't changed is the primary reason we produce this publication – to disseminate accurate, timely, and important information to the WFUHS community about research-related topics.

This is still a work in progress, so let us know how we're doing. Please send your feedback and suggestions for future issues to Penny Gatsis (pgatsis@wfubmc.edu), in Grants Administration. We hope to hear from you soon.



Sally A. Shumaker, PhD

Associate Dean, Research

Faculty Research Awards Day

The 11th Annual Wake Forest University Health Sciences Basic and Clinical Research Awards took place on Friday, September 21, 2007 from 2:00 pm – 5:00 pm in the Nutrition Research Center Conference Rooms. William B. Applegate, M.D., M.P.H., F.A.C.P., Interim President and Dean, provided opening remarks and Sally A. Shumaker, Ph.D., Associate Dean for Research, gave individual introductions of recipients. Following lectures by recipients, awards were presented by Dr. Applegate. Please see page 2 for a list of award recipients and the titles of their talks. Congratulations to all selected for this year's awards.

Faculty Research Day Awardees

New Investigator in Basic Sciences

Janet A. Tooze, Ph.D. M.P.H.

Assistant Professor

Department of Biostatistical Sciences, Division
of Public Health Sciences

**“There Is Much To Do About Nothing:
Analyzing Data With Clumping At Zero”**

New Investigator in Clinical Sciences

Nilamadhab Mishra, M.D.

Assistant Professor

Section on Rheumatology & Immunology,
Department of Internal Medicine

**“Epigenetic Therapy For Lupus and
Atherosclerosis: All In One Pill”**

CONCERN LINES

WFUBMC Compliance Hotline
Confidential and Anonymous
1-877-880-7888 or
[www.tnvinc.com/reportline/
international](http://www.tnvinc.com/reportline/international) 24 hours a day 7
days a week

REGULATORY COMMITTEE

DEADLINES

ANIMAL CARE AND USE COMMITTEE

OCTOBER 5, NOVEMBER 2, AND
DECEMBER 7, 2007

INSTITUTIONAL REVIEW BOARD

NOON ON FRIDAYS

INTRAMURAL RESEARCH SUPPORT

COMMITTEE DEADLINES

REGULAR AND INTERIM -

NOVEMBER 9, 2007

DECEMBER 11, 2008

RESEARCH ADMINISTRATORS

SESSIONS

ALL SESSIONS ARE HELD THE 2ND
THURSDAY OF THE MONTH AT
10:00 AM IN COMMONS CONFER-
ENCE ROOMS 2&3.

PLEASE E-MAIL AMY COMER
(ACOMER@WFUBMC.EDU) TO BE
ADDED TO THE EMAIL LIST.

OCTOBER 11, 2007

OTHER SUPPORT

NOVEMBER 8, 2007

REBUDGETING/CONFLICT

OF INTEREST

DECEMBER 13, 2007

ANNUAL CHRISTMAS BRUNCH AND
UPDATES

Mid-Career Investigator in Basic Sciences

Terrence R. Stanford, Ph.D.

Associate Professor

Department of Neurobiology & Anatomy

**“Monkey See, (Monkey Decide), Monkey Do:
Understanding the Brain Mechanisms that
Link Perception to Action”**

Mid-Career Investigator in Basic Sciences

Jeffrey L. Weiner, Ph.D.

Associate Professor

Department of Physiology & Pharmacology

**“Searching for Synaptic Correlates of
Alcohol-Related Behaviors”**

Mid-Career Investigator in Clinical Sciences

Thomas A. Arcury, Ph.D.

Professor

Department of Family & Community Medicine

**“Addressing Farm Worker Pesticide Exposure:
Translational Research”**

Established Investigator in Basic Sciences

Frank M. Torti, M.D., M.P.H.

Professor & Chair

Department of Cancer Biology

“Iron Clad Promises”

Established Investigator in Clinical Sciences

David M. Herrington, M.D., M.H.S.

Professor

Section on Cardiology, Department of Internal Medicine

“Tools, Teams and Trials - The Building Blocks of Translational Science”

Table of Contents

- Page 1 Welcome!
- Page 2 Faculty Research Awards Day
- Page 3 Pathway to Independence Awards & TSI
- Page 4 Ask Dr. OR
- Page 5 Controller’s Corner & Medical Student Research Awards Day
- Page 6 Industry Relations Reminders & Intramural Research Support Opportunities
- Page 7 Institutional Animal Care & Use Committee
- Page 8 NIH News
- Page 9 NIH News & Limited Competition Applications at WFUHS
- Page 10 Learning Opportunities
- Page 11 Women’s Health Center of Excellence News

Third WFUHS Researcher Receives Pathway to Independence Award

Gale A. Kleven, Ph.D., Obstetrics and Gynecology, is the third WFUHS researcher to receive a Pathway to Independence Award from the NIH. The awards are designed to provide an opportunity for promising postdoctoral scientists to receive support from a mentor to establish themselves as independent scientists. The program supports awardees through two phases: The initial one- to two-year mentored phase allows investigators to complete their supervised research work, publish results, and search for an independent research position. The second independent phase, which lasts three to five years, will allow awardees who secure an assistant professorship or equivalent position to establish their own

research program and successfully apply for an NIH grant to support their work. Dr. Kleven works under the direction of April Ronca, Ph.D. and her project supported by this award is entitled "Pathways of bio-behavioral development in the fetal basis of adult disease."

Dr. Kleven joins her colleagues Drs. Ryan Temel (Pathology/Lipid Sciences) and Deepak Deshpande (Center for Human Genomics) as the current WFUHS holders of this new award mechanism. Our congratulations to all!

The Wake Forest University Translational Science Institute (TSI)

The Wake Forest University Translational Science Institute (WFU TSI) was established in March 2007 by Dr. Applegate. Under the direction of Drs. Gregory Burke, David Herrington, Charles McCall, and Sally Shumaker, the TSI's mission is to accelerate discovery and application of new knowledge to improve human health. Its goals are to create and support successful multidisciplinary teams of scientists focused on important translational research objectives, to train and promote the careers of a new generation of biomedical scientists who can work in multidisciplinary teams of translational investigators to improve human health, to develop new mechanisms to involve the community in the inception, conduct, and evaluation/documentation of the benefits of our initiatives, and lastly, to make available the tools, products and results of our research and educational programs to the network of CTSA recipients and the broader community of translational scientists.

The TSI has twelve established programs. The programs include: Translational Technologies, Community Engagement, Bioethics, Regulatory Knowledge, Biostatistics, Pilot Collaborative, Non-Human Primate Models, Participant and Clinical Interaction Resource (GCRC), Novel Methodologies, Biomedical Informatics, Translational Team Development, and Education and Career Development. Among these programs are four operational offices, comprising Administration, the Translational Resource Unit (TRU), Evaluation, and Education.

The Institute currently has several partners working with the TSI initiative including Virginia Tech, Virginia-Maryland Regional College of Veterinary Medicine, Eastern Tennessee State University, Mission Hospital of Asheville, and Center for Creative Leadership. The TSI will support the newly created Team Development

and Team Science awards designed to support highly innovative translational research. All applications have been received and announcements will be made later this year.

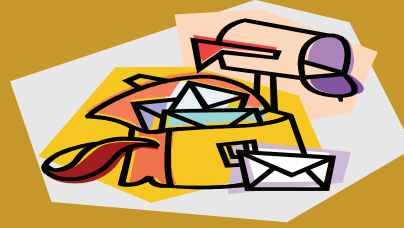
The TSI web site will provide organizational information, program functions, access to seminars, and other TSI related news and events.

The TSI recently granted three K-12 awards to Dr. Chad Miller, Assistant Professor in Emergency Medicine/Surgery, Dr. Satoru Hayasaka, Assistant Professor in Biostatistical Sciences and Radiology, and Dr. Christopher Sullivan, Assistant Professor in Surgery-Otolaryngology. The TSI K-12 awards are designed to foster early career development of promising clinical and translational scientists by providing 75% salary support, mentoring and research supplies to individuals who have proposed innovative multidisciplinary team projects. Additional information on the awardees and their research will be posted on the new TSI web site in the near future.

The TSI will submit a Clinical and Translational Science Award (CTSA) application on November 7, 2007 <http://grants1.nih.gov/grants/guide/rfa-files/RFA-RM-07-007.html>.

If you would like more information on the NIH CTSA program, go to <http://ctsaweb.org/>. For details on the WFU TSI, please contact Todd Thornburg, TSI Administrative Director, at 716-5773 or by email at tthornbu@wfubmc.edu.

Ask Dr. OR



Dear Dr. OR,

I am an associate professor, primarily on a research “track,” and I will be up for promotion in the next two or three years. My chair tells me I should volunteer for an NIH study section. I thought these studies were handpicked by “insiders,” so it doesn’t seem like it’s worth the effort. Also, a few of my colleagues have been on study sections before, and it was a mountain of work to get through that set them behind in their own research. So is my chair right? Why exactly should I volunteer for more work that I won’t get paid for? And if I should do this, how do I go about it?

Signed, Skeptical

Dear Skeptical,

Your chair has given you a hint about a growth opportunity. Here are some of the benefits to being a grant reviewer on an NIH study section: Service on a study section is highly valued by those who will evaluate your dossier for promotion. It keeps your research fresh and timely if you know about the latest science in your area. Even seasoned veterans pick up new tips on how to write better grants from reviewing other scientists’ applications. This will help your own work and that of any junior faculty or graduate students whom you mentor. NIH administrators choose study section chairs, consensus panel members, and other influential committee members from (you guessed it) study section members who have impressed them with their

dedication and insight. This is how to get a sneak peek at policy changes and new funding announcements in the pipeline early enough to position yourself and your colleagues to respond with a well-prepared and highly competitive proposal. These “in the know” people are perhaps some of the “insiders” you mention, but they earned it, and there’s no reason you can’t be one, too. Finally, service on a study section is just that – service to the scientific community. It reflects well on you, both intramurally and extramurally, that you’re willing to “give back” when others have done the same for you. NIH knows that researchers have many demands on their time, and they are seeking ways to lighten the workload on their reviewers like never before. This could be the best possible time to volunteer for study section service. NIH’s Center for Scientific Review is actively seeking candidates for study sections. You can self-nominate or recommend a colleague you think is worthy. Email Dr. Diane Stassi at RecruitReviewers@csr.nih.gov to request the reviewer application template. Also see the link below for details on the selection process. For more details, feel free to contact the RSC in the Office of Research.

<http://>

cms.csr.nih.gov/PeerReviewMeetings/StudySectionReviewersmHowScientistsareselected+orStudySectionService.htm.

Finally, keep in mind that other grant funding organizations also need reviewers, and service on these is also favorably viewed. Given your contacts and workload, one of them might be a good way to get started.

Dear Dr. OR,

I am working on an NIH grant application that includes a large, complex budget. I sent this budget to the Controller’s Office for review and received an email response indicating that all grant budgets were now being reviewed in the Grants Administra-

tion section of the Office of Research. Is it true that the Controller’s Office does not need to review grant application budgets before submission? Does the 3 day rule still apply to application review in the Office of Research, including the budget?

Signed, Not Sure Where to Send What

Dear Not Sure,

In April, the Office of Research Grants Administration staff assumed responsibility for budget review related to grant applications. Budget review will now take place as part of the grant review conducted by the grant administrator in the Office of Research. At minimum, the budget, budget justification, checklist and route form should be routed to the Office of Research 5 days prior to the sponsor’s deadline. The complete application can be submitted 3 days prior to the sponsor’s deadline. For electronic submissions, the final, complete application should be uploaded for submission 2 days prior to the deadline.

Dear Dr. OR,

I just received a Notice of Grant Award for my R01 grant from the National Institute of Diabetes and Digestive and Kidney Disease (NIDDK). I noticed that although I received a full year of funding, the budget period for Year 1 is only 10 months. Why was this done?

Signed, Curious

Dear Curious,

In recent years, there has been a dramatic increase in the number of projects funded late in the NIH fiscal year. The result was a clustering of projects in the third and fourth quarters. This clustering caused serious problems for NIH staff who must prepare, review, and negotiate grant awards and cooperative agreements. In response to this situation, the NIDDK (and other institutes) are currently “recycling” some awards.

The purpose of “recycling” is to allocate award start dates throughout the year. Institutes have found that this strategy is very successful in more evenly distributing the staff’s workload. If the reduction of time causes a significant amount of carryover for the next budget period, explain the situation in your progress report as follows: the current budget period was reduced to 10 months, with 12 months of funding received, resulting in an un-obligated balance.

Send questions for Dr. OR to Penny Gatsis (pgatsis@wfubmc.edu).

Controller’s Corner

We would like to welcome Diane Hall and John Myers to our Grants Staff. Diane is currently working with Physiology and Pharmacology. John is responsible for Biochemistry, Anesthesiology, Genomics and Radiological Sciences. Both have been here for over 90 days and have adapted well to the world of grants.

Cost Transfers and HR Retros:

Please remember to include detailed information when completing the cost transfer and HR retro forms. Auditors do review these forms. If the documentation is complete and the situation is clearly explained, there are typically no further questions. Also please remember the Department Chair or Business Manager must sign the form to indicate their approval.

PI Transfers:

When a PI transfers to another institution but will be subcontracting back to WFUSM from the grant he/she is taking with him/her, the new PI here who will receive the funds must complete an internal route form and a pre-award account request and route the information for the subcontract through the Office of Research. This is important for many reasons: the PI here is changing; the Sponsor is changing; and the amounts and scope of work are changing. There will be salary and other charges that will be incurred at WFUSM and it may take several months before the new award from the original PI’s new institution is received at WFUSM. We cannot simply continue to use the old chart field as it must be finalized. If charges continue to post against this chart field, it makes it difficult to provide final figures and is confusing for all involved.

Medical Student Research Awards Day

The 23rd Annual Medical Student Research Awards Day is scheduled for **Wednesday, October 3, 2007** at noon. The festivities will begin with a lecture from nationally recognized clinical investigator, Dr. Bruce A. Molitoris, Professor of Medicine and Director of the Division of Nephrology at the Indiana University School of Medicine. He will speak on “The Expanding Role of the Physician Scientist in Identifying, Developing and Commercializing Advances in Medical Care.” Poster presentations will immediately follow the lecture, from 1- 4 p.m. in Conference Rooms 1-3, G Floor Commons Building and will be open to faculty and students. Lunch will be served.

Industry Relations Reminders

Confidentiality Agreements

Please be sure to provide contact and background information, as well as any deadlines when you submit Confidentiality Agreements to Industry Relations for processing.

Material Transfer Agreement

Please be sure to include a completed Material Transfer Agreement Questionnaire with any requests to process a Material Transfer Agreement.

Clinical Trial Agreements

Please be sure to submit the required routing documentation no later than when you submit the study to the IRB for review when applicable. Required routing documentation includes: Route Form, Protocol (draft is acceptable), and Research Agreement Questionnaire.

Basic Research Agreements

Please be sure to submit the required routing documentation no later than when you submit the study to the ACUC for review when applicable. Required routing documentation includes: Route Form, Protocol (draft acceptable), and Research Agreement Questionnaire.

Further information and the forms required for all agreements processed by Industry Relations can be found on our web site. As these forms are periodically updated, please verify you have the most current form prior to submission of any documents to the office.

Intramural Research Support Opportunities

CROSS CAMPUS COLLABORATIVE RESEARCH SUPPORT FUND

The Cross Campus Collaborative Research Support Fund (CCRSF) seeks to stimulate pilot projects between the School of Medicine and Reynolda Campus faculty. The goal of the CRSF is to assist research pursuits and to generate extramural funding. Awards will be restricted to collaborative efforts between full-time, tenured or tenure-track faculty members (including nine-month appointments), with preference given to projects that are not yet competitive for external funding. A maximum of \$20,000 over a 12-month period will be awarded for each collaborative project. For details go to <http://www1.wfubmc.edu/OR/IRSC/>. The deadline for submission is February 8, 2008.

TRAVEL AWARDS

The Faculty Foreign Travel Awards Program seek to encourage career development through participation in international scientific endeavors. Applications will be competitively evaluated by the Intramural Research Support Committee. Potential for career development and unique scientific, academic, or clinical opportunities will be the primary criteria. Awards are limited to one-half of allowable travel costs (maximum of \$1,500.) Eligible applicants include assistant professors, associate professors and professors who lack access to funds for travel. Preference will be shown to junior faculty. For details go to <http://www1.wfubmc.edu/or>. The deadline for submission is February 22, 2008.

FUND FOR ETHICS, LEADERSHIP AND CIVIC RESPONSIBILITY

Established in 1991 by a grant from the Mary Reynolds Babcock Foundation, the Fund seeks to help faculty, staff, and students to develop curriculum and extracurricular programs in ethics, leadership and civic responsibility. The University seeks to promote and enhance initiatives connecting theoretical ideas with pragmatic practices. The Fund is administered by a Committee with representatives from multiple units on both campuses.

Proposals (\$10,000 maximum) will be assessed on their relationship to the goals of the Fund, clarity, outcomes for the University and community, and qualifications and background of the applicants. Priority will be given to proposals that incorporate student learning opportunities; show collaboration between 2 or more WFU schools or programs, or substantive involvement with community partners; and have potential for sustainability. For details, go to <http://www.wfu.edu/provost/ethics/>.

The deadlines for submission are Oct 1, 2007 and March 1, 2008.

Institutional Animal Care & Use Committee

IACUC Fees for Industry Sponsors Start January 1, 2008

January 1, 2008, the WFU Institutional Animal Care and Use Committee will begin charging a \$2000 fee for the initial review of protocols covering commercially sponsored research. Fees apply to commercial sponsors only; they will not apply to other sponsors, including intramural sources, the federal government and most private, non-profit sources. The fee will be roughly equivalent to the initial review of human subjects research conducted by the WFUSM Institutional Review Board. Researchers should negotiate payment of these fees in project budgets provided by the industry sponsors. For more information see the IACUC policy: http://infinet.wfubmc.edu/depts/ord/acuc_policy/new%20policies/33%20WFU%20ACUC%20Policy%20Fees%20for%20Review%20DRAFT.doc.

IACUC Policy & Procedure Changes Amending Protocols

The IACUC just made it easier to change protocols by allowing the addition of most surgical procedures by amendment, rather than by submitting a new full protocol. A significant proportion of projects involve surgical manipulation, and the new policy seeks the proper balance between the exigencies of research and conscientious animal care. See the complete policy [here](#).

Managing Pathogens in Cell Lines Used in Rodents

Outbreaks of infectious disease, such as Mouse Hepatitis Virus (MHV) and Mouse Parvovirus (MPV), in rodent populations housed in research facilities result in costly delays that can severely hamper the research enterprise at WFU. Preventing outbreaks requires a multi-layered approach, including regular evaluation of transplantable cell lines for rodent pathogens. See the complete policy [here](#). In brief:

- Rodent pathogen testing is required of tumor and transplantable cell lines that are of rodent origin or lines of any origin, human or animal, that are maintained and passed in rodents.
- Cell lines may be used in the facility only after test results are completed. A copy of the test results must be filed with the IACUC approved protocol after review by an Animal Resources Program Veterinarian. Recommended testing is available from [RADIL](#), e.g., for mice IMPACT profile III. Other reputable methodologies will be considered.

Tribromoethanol (Avertin®)

Standard Operating Procedure

Tribromoethanol is a popular injectable anesthetic agent used in mice. It was once manufactured specifically for use as an anesthetic by Winthrop Laboratories under the trade name Avertin®, but this product is no longer available. Investigators who wish to use Tribromoethanol as an anesthetic must make their own solutions.

Tribromoethanol is appropriate for short-term procedures in mice and has a good margin of safety when used appropriately; however, it has unique chemical properties and comes with some risk of toxicity. This [new SOP](#) describes acceptable methods for compounding and storing this anesthetic agent for use in mice. Other methods must be approved by the IACUC.

AAALAC Preparations Underway

The Animal Resources Program and the IACUC are hard at work preparing for the triennial AAALAC reaccreditation site visit and review process. A detailed document is due to the AAALAC office at the end of November, with the site visit early in 2008. AAALAC accreditation is one of the primary ways by which we demonstrate our compliance with established animal research policies and procedures, so it is very important for us to be thoroughly prepared. This means that those in the WFUHS community who use animals in their research will be hearing from us, as we gather accurate information about the many types of experiments in active protocols on all our campuses. We thank you in advance for your understanding and cooperation in this process, and we look forward to being recognized yet again as a high-quality institution with top-notch faculty and staff devoted to the humane care of animals in research.

On the Horizon: eACUC!

We are excited about being in the planning stages of the eACUC process, by which submission of ACUC protocols and reviews will become electronic. We will benefit from the experience of our colleagues on the IRB, whose eIRB process has been running smoothly for some months. eACUC will likely use the same platform as eIRB, which will streamline the implementation process and facilitate cross-talk among the various software systems at WFUHS. Stay tuned for more news on this topic in 2008.

NIH News

Review Cycles for New Investigator R01 Applications

As part of the NIH's continuing commitment to new investigators, a pilot effort was begun in 2006 to allow new investigators to have the option of submitting a resubmission/amended R01 application for consecutive review cycles, saving four months. This pilot was extended to twenty-two additional study sections in January of 2007 and forty-six more in April of 2007. The three cycles of the pilot have involved nearly 2000 new investigator R01 applications reviewed in the original forty study sections in the Center for Scientific Review (CSR).

Approximately 13% of the eligible new investigators have used the option of next-cycle submission. Beginning with the September/October 2007 Study Section meetings, the CSR is extending this to all new investigator R01 applications submitted for standard receipt dates. The CSR recurring study sections that review new investigator R01 applications will meet on a schedule to allow consecutive cycle resubmissions.

NIH to Host Regional Consultation Meetings on Peer Review

NIH is undertaking a comprehensive look at their entire system of research support, including the peer review system, in order to enhance its efficiency and effectiveness. NIH has formed the Peer Review Working Group of the Advisory Committee to the Director (ACD), one of whose functions is to seek advice from the scientific community on all aspects of the peer review process. As one approach, the working group will host three 4-hour consultation meetings and are asking that the research community attend. Participants will be able to make brief presentations offering specific strategies or tactics for enhancing NIH peer review and research support. In particular, NIH is seeking bold, unconventional approaches to perceived issues. The goal is to craft a system with a minimum of bureaucratic burden that identifies and funds the best scientists to do the best science. The locations and dates of the scheduled meetings are:

- New York City, October 8, 2007 at the Embassy Suites
- San Francisco, October 25, 2007 at the Renaissance Park 55

Registration information can be found at <http://enhancing-peer-review.nih.gov/>.

2008 NIH Regional Seminars in Program Funding and Grants Administration

Two NIH Regional Seminars covering topics related to NIH extramural program funding and grants administration have been planned for 2008. Each Regional Seminar encompasses two full days, providing information about the NIH funding process, from opportunity identification and application preparation through post award administration. Presentations are targeted towards research administrators, new and experienced investigators, post docs and trainees. Opportunities for informal interactions between seminar participants and NIH grants management, program, policy, and review staff are incorporated into the program and such interactions are highly encouraged. NIH electronic research administration computer labs are offered on a day adjacent to the two-day seminar.

March 25-26, 2008 - University of Texas Health Science Center at San Antonio. For questions please contact Jane Youngers at 210-567-2340 or via e-mail at nihseminar@uthscsa.edu. On-line registration available after October 1, 2007 at http://www.uthscsa.edu/ogm/nih_seminar.htm.

June 19-20, 2008 - University of Illinois at Chicago. For questions please contact Monica Rausa Williams at 312-996-4995 or via nihseminar@uic.edu. On-line registration available after October 1, 2007 on the [UIC - NIH Regional Seminar](http://tiger.uic.edu/depts/ovcr/research/seminar/NIH) webpage at <http://tiger.uic.edu/depts/ovcr/research/seminar/NIH>.



NIH Loan Repayment Programs

NIH is now accepting applications for the five 2007 Loan Repayment Program (LRPs). LRPs can repay up to \$35,000 a year of qualified educational debt for health professionals pursuing careers in clinical, pediatric, contraception and infertility, or health disparities research. The programs also provide coverage for Federal and State tax liabilities. Applicants must have a doctoral-level degree, devote 50% or more of their time to non-profit or government funded research, and have educational debt equaling at least 20% of their institutional base salary. U.S. citizens, permanent residents, or U.S. nationals may apply. The programs are the Clinical Research LRP, Pediatric Research LRP, Contraception and Infertility Research LRP, Clinical Research for Individuals from Disadvantaged Backgrounds LRP, and Health Disparities Research LRP. All applications must be submitted online by **December 1, 2007**. Additional information and online applications are available at <http://www.lrp.nih.gov>.

NIH Funding Opportunities

NHLBI Ancillary Studies in Clinical Trials (R01) RFA-HL-08-001

The overall goal of this initiative is to solicit research grant applications to conduct time sensitive ancillary studies in conjunction with on-going clinical trials (NIH or non-NIH supported) related to heart, lung and blood diseases and sleep disorders. The ancillary study can address any research question related to the mission of NHLBI for which the parent study can provide participants, infrastructure, and data. This funding opportunity announcement (FOA) will use a modified application process, accelerated peer review, and modular funding. The application is limited to 15 pages for Sections 2 through 5 of the research plan, and the introduction for resubmission applications may not exceed 2

pages. The accelerated approach is expected to decrease the time from application to funding to approximately 20 weeks. All ancillary study applications must demonstrate the time-sensitive nature of their proposal and why an expedited review is essential to its feasibility. This FOA will utilize the NIH Research Project Grant (R01) award mechanism.

Letter of Intent – December 14, 2007, April 11 and August 15, 2008

Deadlines – January 14, May 12 and September 15, 2008

Limited Competition Applications: WFUHS Procedures

Some funders limit the number of applications that can be sent from one institution. For these situations, the Office of Research now has a calendar of upcoming limited-submission grant opportunities on our web site. Go to <http://www1.wfubmc.edu/OR/Applications+and+Awards/Limited+Submission+Funding.htm>

An investigator may plan a proposal unaware that another WFUHS colleague is doing similar work. Hence, we have detailed our procedures for internal review and decision regarding which application(s) can be submitted. Note that a letter of intent and pre-proposal are needed, by stipulated deadlines, to enable the Associate Dean of Research to make a quick decision and thus facilitate the grant writer's momentum. Please send the [Intent Form](#) as soon as you know you have an interest in the funding program, or no later than the first internal deadline. In competitive situations, Grants Administration may deny approval to a proposal that not been vetted by the internal procedures, since to do so would be in violation of the funder's regulations.

For questions about these procedures, please contact Paula Means, Assistant Dean for Research (pmeans@wfubmc.edu). The Research Support Core (rscore@wfubmc.edu) can also be a resource for more information or for assistance with preparing the application.

Learning Opportunities at WFUHS

Topics in Clinical Trials Research Workshops

The 2007 Topics in Clinical Trials Research (TICTR) Workshops I and II will be taking place on **Monday, November 5, 2007**, 8:30 a.m. - 12:45 p.m. (Workshop I) and on **Monday, November 12, 2007**, 8:30 a.m. - 12:45 p.m. (Workshop II) in the Ardmore Cafeteria Conference Rooms 1 & 2. These workshops are designed to provide an overview of the research resources and regulatory requirements for conducting clinical research studies. The workshops will be of interest to those who are new to clinical research as well as to those who would benefit from a review of the principles of clinical trials, GCP guidelines, clinical research design and operational issues, and human subject protection and regulatory considerations. Human subject protection training certification may be obtained by attending both Workshop I and Workshop II. Registration for each workshop is \$30/person. Early registration is encouraged, as enrollment is limited. For more information or to register, please contact Sarah Hutchens by email at sarhutch@wfubmc.edu.

InfoEd NIH Electronic Submission Training

The InfoEd eRA portal is a web-based system designed to manage the administrative tasks involved in executing sponsored research proposal activities which enables faculty, administrators and staff to efficiently track grants through their lifecycle. Attendees will learn all necessary steps in preparing and creating, for institutional approval, the submission of electronic grant proposals to NIH. The following Info Ed workshops are designed to provide a more "hands on" interaction; therefore, space is limited as each participant will be assigned a computer. These workshops will be held in Classroom B of Carpenter Library. (Please contact Rachel Woodside at 3-7162 to be wait-listed for full classes.)

10/02/07 - 10-12 p.m. - Budget Only
 10/09/07 - 1-3 p.m.
 10/11/07 - 3-5 p.m. - Budget Only
 10/18/07 - 9-11 a.m.
 10/23/07 - 9-11 a.m.
 10/25/07 - 12-2 p.m. - Budget Only
 11/01/07 - 9-11 a.m.
 11/06/07 - 1-3 p.m.

11/09/07 - 9-11 a.m. - Budget Only
 11/13/07 - 1-3 p.m.
 11/27/07 - 1-3 p.m.
 11/29/07 - 9-11 a.m. - Budget Only
 12/04/07 - 1-3 p.m.
 12/06/07 - 9-11 a.m. - Budget Only
 12/11/07 - 9-11 a.m.
 12/13/07 - 1-3 p.m. - Budget Only

<p>INSTITUTIONAL REVIEW BOARD (IRB) UPDATE</p> <p>Quarterly update of Institutional Review Board activities (<i>Note: It is not necessary to register in advance for these sessions</i>)</p> <p>Date: November 29, 2007 Time: 2:00 - 3:00 p.m. Location: Commons 2 & 3, G-floor, Nutrition Building</p>	<p>STUDY COORDINATOR 201</p> <p>This workshop is a follow-up to the "Study Coordinator 101" and will provide more in depth information related to starting an Investigator Initiated Project, working with Industry Relations, Budgets, IND and IDE regulations, and much more.</p> <p>Date: December 13, 2007 Time: 1:00 p.m. - 5:00 p.m. Location: Commons 1 & 2, G-floor, Nutrition Building</p>	<p>HOW TO WRITE A PROPOSAL</p> <p>This workshop will provide a step-by-step process, using case study examples, on how to write an effective protocol to obtain IRB approval.</p> <p>Date: October 18, 2007 Time: 12:00-1:00 p.m. Location: Commons 1 & 2, G-floor, Nutrition Building</p>
---	---	--

Register online for any of these workshops at <http://www1.wfubmc.edu/OR/Educational+Outreach/>. For questions, contact rscore@wfubmc.edu or Rachel Woodside at 3-7162.

*W*OMEN'S
HEALTH CENTER
of EXCELLENCE
Research, Leadership, Education

Women's Center Welcomes Shannon Golden

Please help us welcome Shannon Golden, M.A., to the Women's Health Center of Excellence. She acts as Research Program Coordinator, Graylyn Conference Coordinator, Triathlon Co-Director, and Financial Manager. She brings a decade of project management experience with her, and has been with WFUHS for over six years.

Brown Bag Research Workshop

Developed for faculty to enhance research skills. "Responding to Reviewers" is the topic. Facilitators: Sara Quandt, Ph.D., and James Eisenach, M.D.

Date: November 12

Time: Noon—1

Location: Cancer Center rooms 2 C&D

Scientific Review Service

The WHCOE's Research Program's faculty committee provides scientific reviews of grant proposals upon request. The committee also provides assistance in responding to grant reviews. If you would like your materials reviewed, or if you have questions about the process, please contact the Program Coordinator Shannon Golden (716-9714; sgolden@wfubmc.edu) or the Program Director, Dr. Mark Cline (716-1564; jmcline@wfubmc.edu).

Women's Cognitive Health Conference Approaches

The 11th Biennial Conference on Women's Cognitive Health entitled, "*Continuing the Dialogue: Cutting Edge Translational Research*" will be held October 24 - 26, 2007, at the Graylyn International Conference Center. This year, we hope to highlight the importance of translational research in the study of women's cognitive health and to encourage and foster collaboration among participants to decipher the emerging research regarding cognition, hormone therapy, and women's health. The emphasis of conference sessions will be on research from bench to bedside with a translational focus. Go to our website for more information or to register. <http://www1.wfubmc.edu/wchoe>.

Funding Opportunities in Women's Health

Several exciting NIH funding opportunities in women's health research have recently been announced. These announcements include, "*Advancing Novel Science in Women's Health Research (ANSWRH)*" (PAS-07-381 and PAS-07-382). For more details about these Program Announcements and to view a list of others, please visit our website. The list of funding opportunities on our website is updated regularly.

Save the Date:
3rd Annual
Women's Health Research Day
April 3, 8—5

Pursuit Staff

Amy Comer

Penny Gatsis

Karen Klein

Paula Means

Rachel Woodside