

15th Annual
Advances in Physiology
& Pharmacology in
Anesthesia and Critical Care

November 1-4, 2009
Amelia Island Plantation
Amelia Island, Florida

PROGRAM COMMITTEE

Roger L. Royster, M.D., Director
Sarah G. Bodin, M.D.
James C. Crews, M.D.
Drew A. MacGregor, M.D.
Kenneth E. Nelson, M.D.
Michael A. Olympio, M.D.
Thomas F. Slaughter, M.D.
Joseph R. Tobin, M.D.
Sherrri Stockner
Sue Saunders

www1.wfubmc.edu/anesthesiology

WAKE FOREST
UNIVERSITY
SCHOOL OF MEDICINE

Department of Anesthesiology
Medical Center Boulevard
Winston-Salem, NC 27157-1009

Nonprofit Organization
U.S. Postage
PAID
Winston-Salem, NC
Permit No. 154

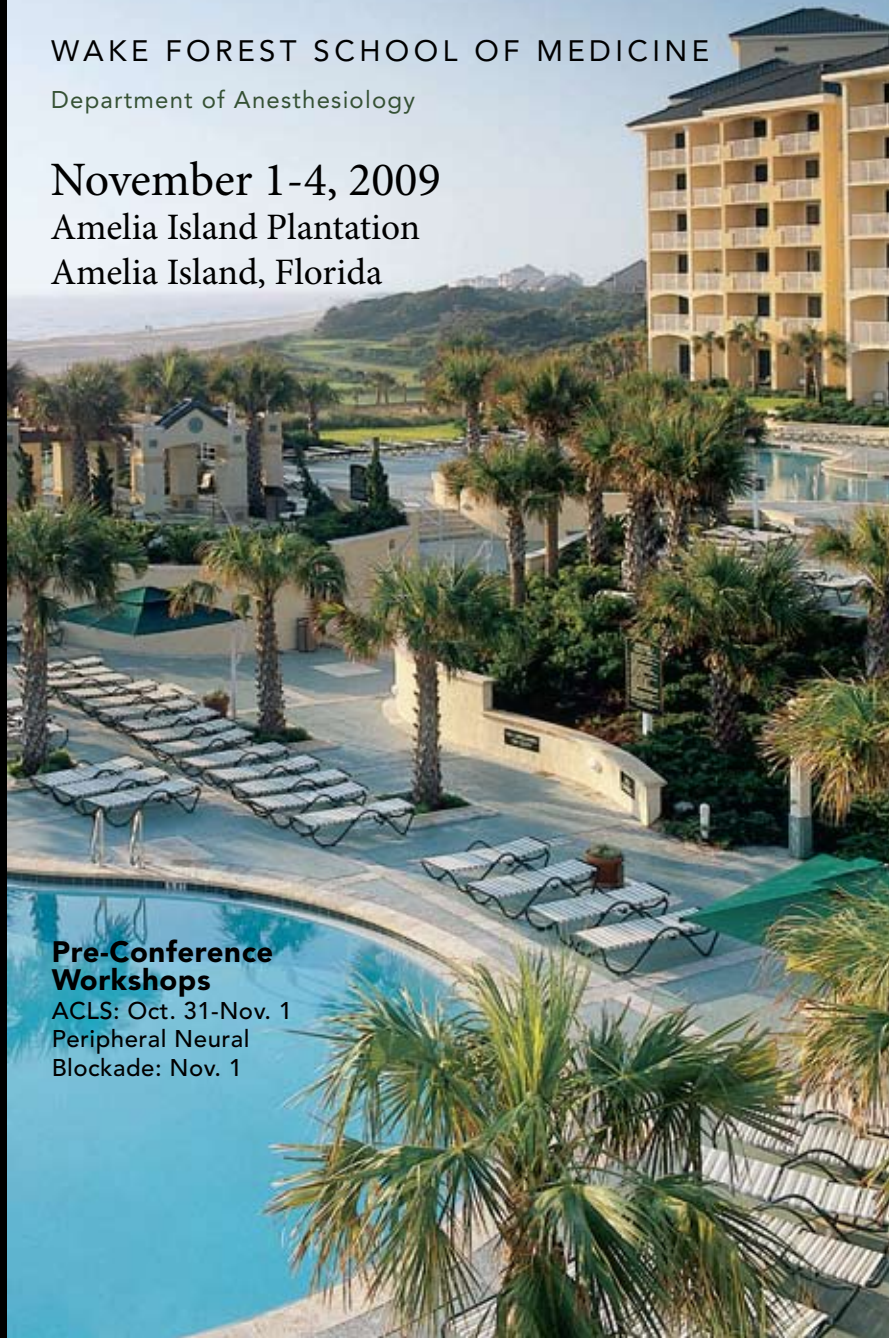
15th Annual Advances in Physiology & Pharmacology in Anesthesia and Critical Care

WAKE FOREST SCHOOL OF MEDICINE

Department of Anesthesiology

November 1-4, 2009
Amelia Island Plantation
Amelia Island, Florida

**Pre-Conference
Workshops**
ACLS: Oct. 31-Nov. 1
Peripheral Neural
Blockade: Nov. 1



GENERAL INFORMATION

Welcome to the fifteenth annual meeting of Advances in Physiology and Pharmacology in Anesthesia and Critical Care presented by the Department of Anesthesiology of Wake Forest University School of Medicine. We have selected outstanding faculty who will present current information on scientific and clinical issues. These presentations will aid in the understanding of disease management and patient safety issues facing today's practitioners of anesthesia and critical care medicine. We provide time for questions and answers in the form of panel discussions after each series of lectures. You also have the opportunity to update your Advanced Cardiac Life Support provider skills or attend a Peripheral Neural Blockade Workshop. Furthermore, our popular special lecture series on Sunday and Tuesday evenings provides an opportunity for you and your guest to hear renowned speakers on national issues.

The meeting will be held at the luxurious Amelia Island Plantation which overlooks the azure waters of the Atlantic Ocean on the east, and abundant green marshland on the west. Noted for its environmentally conscious development, Amelia Island Plantation is Florida's greenest resort, which features miles of wide, shell-strewn beaches; world-renowned golf and tennis facilities; a luxury spa; fine dining; family recreation; and shopping. We allow time each afternoon to enjoy the multitude of activities this wonderful resort has to offer. We promise a superlative conference and opportunities for you to share the autumn beauty and the recreational activities of Amelia Island Plantation with family and friends. Please join us.

Roger L. Royster, M.D., Director
Program Committee

COURSE GOALS AND OBJECTIVES

Our course will provide information regarding the physiology of various disease states, new anesthetic techniques, and modernized modes of therapy. At the conclusion of the course, the participant should be better able to:

- describe the physiology of lightning and its impact on humans;
- review the latest methods of renal protection, problems with neuromuscular monitoring, and issues on cardiac preoperative evaluation;
- discuss recent advances in perioperative glucose management, anticoagulation, and regional anesthesia, and issues related to vascular emergencies;
- describe problems in conscious sedation, neuroanesthesia, and peripheral blockade in ambulatory patients; review new information on pulse oximetry, large tidal volume ventilation, and ABG interpretation;
- optimize patient-controlled labor analgesia, predict hypotension with spinal anesthesia, and demonstrate how to resuscitate the pregnant and newborn patients;
- classify ethical dilemmas in disasters, discuss neurotoxicity of anesthetics, post-operative problems in children, and the management of congenital disease in adults;
- discuss issues of pharmacology in older patients, non-narcotics for pain, and management of anticoagulants for surgery.

ACLS WORKSHOP

(optional with an additional fee)

We offer a 10-hour ACLS course, updated to include all the new standards, with didactic lectures Saturday evening, October 31, and a full day workshop on Sunday, November 1. The ACLS workshop is limited to 40 participants. For further information, contact Sue Saunders at 336-716-7161 or ssaunder@wfubmc.edu.

PERIPHERAL NEURAL BLOCKADE WORKSHOP

(optional with an additional fee)

This 3.5-hour workshop, scheduled for Sunday morning, November 1, will provide hands-on instruction in a variety of upper and lower extremity regional block techniques. The registrant will have the opportunity to interact with well-known experts in the field, utilizing live-model demonstration of landmarks in a small-group format. The workshop is limited to 40 participants, allowing for 4 groups of 10.

TARGET AUDIENCE

This conference will provide useful information on basic physiologic principles and pharmacologic techniques for physicians, resident physicians, nurse and student nurse anesthetists, as well as pharmacologists, pharmacists, and other healthcare providers.

GENERAL INFORMATION

SPECIAL NEEDS

Wake Forest University School of Medicine adheres to the Americans with Disabilities Act. Please report to the Department of Anesthesiology at 336-716-2712 any special needs you may have for participation in and/or access to this educational activity.

ACCREDITATION

The Wake Forest University School of Medicine is accredited by the Accreditation Council for Continuing Medical Education to provide continuing medical education for physicians.

CREDIT

The Wake Forest University School of Medicine (WFUSM) designates this educational activity for a maximum of 17 *AMA PRA Category 1 Credit(s)*[™]. Physicians should only claim credit commensurate with the extent of their participation in the activity. This program is awarded 17 CE credits by the American Association of Nurse Anesthetists, Code No. 31550, Expiration Date 11/4/09. ACLS Course: The WFUSM designates this educational activity for a maximum of 10 *AMA PRA Category 1 Credit(s)*[™]. Physicians should only claim credit commensurate with the extent of their participation in the activity. The AANA awards 10 CEs, Code No. 31551, Expiration Date 11/1/09. Peripheral Neural Blockade Workshop: The WFUSM designates this educational activity for a maximum of 3 *AMA PRA Category 1 Credit(s)*[™]. Physicians should only claim credit commensurate with the extent of their participation in the activity. The AANA awards 3 CEs, Code No. 31552, Expiration Date 11/1/09.

LOCATION (www.aipfl.com)

Amelia Island Plantation is nestled between the salt marshes of the Intracoastal Waterway and the azure Atlantic Ocean on the east and abundant green marshland on the west. Encompassing 1,350 acres, the resort is noted for its environmentally conscious development; Amelia Island Plantation is Florida's greenest resort and is known for its sanctuary of natural beauty and wildlife.

Amelia Island Plantation offers 3-1/2 miles of beach, four golf courses, 23 Har-Tru[®] (green clay) tennis courts, kayaking, full-time nature center, luxury spa, 20 pools, 10 dining outlets, an old Florida-style shopping village, and a unique two-tiered beachside pool deck for personal rejuvenation and pure relaxation for after-dinner drinks and entertainment.

Developed in harmony with nature since its inception in the 1970s, Amelia Island Plantation retains more than 75 percent of its original maritime forests together with more modern aspects of 49,000 square feet of meeting space as well as wireless access.

ACCOMMODATIONS

Amelia Island Plantation offers single or double occupancy negotiated rates as follows: Resortview Room - \$199; Oceanview Room - \$249, subject to applicable taxes at the time of the meeting. The current taxes are: State 7%, Occupancy 3%, and are subject to change. There is a daily resort fee of \$10 plus sales tax (7%), per person (16 years of age and older), per night, which includes housekeeping gratuities, unlimited high speed internet access in all applicable accommodations, transportation driver gratuities, unlimited on-property shuttle transportation, self-parking, unlimited use of health & fitness center, 1 bucket of range balls, in-room coffee, and 24/7 public safety staff. Make room reservations by calling 1-888-261-6165 by October 1 to guarantee space in the Anesthesia Meeting Block. Reference group number 8B35RU for these rates. After October 1, room requests will be accommodated on a space available basis. For early November, expect evenings/nights in the 50s and afternoon highs in the low 70s.

Dinner reservations are the individual guest's responsibility and should be made as early as possible to guarantee prime time dining. The daily dress at Amelia Island Plantation is resort casual, but ripped, torn or frayed clothing is unacceptable.



Har-Tru[®] Tennis Courts

GENERAL INFORMATION

TRAVEL

Amelia Island Plantation is only 29 miles from Jacksonville International Airport. Transfers to and from Jacksonville International Airport are available through the Amelia Island Plantation Transportation Department and can be arranged online or by email (www.aipfl.com), or by calling 1-888-261-6161, option #7.

REGISTRATION

To register, complete the attached registration form and return by mail or FAX (with credit card information) to the Department of Anesthesiology at 336-716-9888. The registration fee includes tuition (workshops not included), Sunday evening reception, continental breakfasts, break refreshments each day, and a comprehensive course syllabus. Registration deadline is October 16, 2009. For further information, contact the Department of Anesthesiology at 336-716-2712.

CANCELLATION POLICY

Cancellation deadline is **October 16, 2009**, beyond which no refunds will be issued. Meeting and workshops cancellation must be received in writing by October 16, 2009, in order to receive a full refund less a \$75 administrative charge. Hotel reservations must be cancelled 7 days prior to arrival and a cancellation number obtained to ensure deposit refund.

CONFLICT OF INTEREST POLICY

It is the policy of Wake Forest University School of Medicine to require disclosure of any significant financial interest or any other relationship a faculty member or planning committee member has with the manufacturer(s) of any commercial products or services discussed in an educational presentation. This information can be found in the activity materials distributed at the meeting.

COMMENTS FROM PREVIOUS PARTICIPANTS

- *This has been the best CME conference I have ever attended.*
- *The topics were up-to-date, useful in my practice, and the meeting was well organized.*
- *I learn more here than at any other meeting. Speakers are excellent and focus on advances.*
- *Affable interchange of information among faculty and attendees.*
- *Appreciate the opportunity to learn from such an array of experts on a cross-section of current and relevant topics.*
- *One of the best conferences I have attended in my 26-year career; top notch.*



Ocean Links Golf Course

AGENDA

Advanced Cardiac Life Support Workshop

DREW A. MACGREGOR, M.D., DIRECTOR

Saturday, October 31, 2009

3:30 - 4:00 pm Registration
4:00 - 6:30 Didactic Lectures – Lectures cover Arrhythmias, Pharmacology, Electrical Therapy, Automated Defibrillators and Case Reviews

Sunday, November 1, 2009

7:30 am Registration/Continental Breakfast
8:00 - 12:00 ACLS Teaching Rotations
Airway Management, Defibrillation and AEDs; Bradycardia/Asystole/PEA; Tachyarrhythmias; Ventricular Tachycardia/Fibrillation; BLS
1:00 - 5:00 Case Study Presentations, Written Exam and Megacode Evaluation

Objectives

At the conclusion of this workshop, you should have the ability to: analyze and practice the algorithms for Advanced Cardiac Life Support; discuss new developments in Emergency Cardiac Care; employ automated defibrillators; integrate the algorithms and new developments into plans for the management of patients in need of ACLS.

Peripheral Neural Blockade Workshop

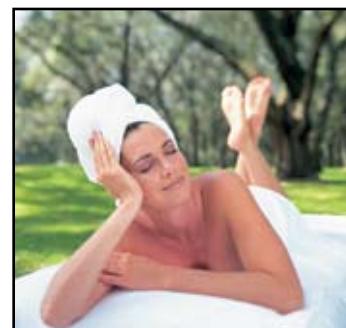
JAMES C. CREWS, M.D., DIRECTOR

Sunday, November 1, 2009

7:30 am Registration/Continental Breakfast
8:00 - 12:00 Peripheral Neural Blockade Introduction, Group Assignment, and Plan
4 stations, 45 minutes per station
(10:00 - 10:30 Break)
Upper Extremity 1 - Supraclavicular, axillary
Joseph M. Neal, M.D.
Upper Extremity 2 - Interscalene, infraclavicular
Linda Le-Wendling, M.D.
Lower Extremity 1 (supine) - Femoral, lateral distal sciatic (popliteal), saphenous
Robert S. Weller, M.D.
Lower Extremity 2 (lateral) - Lumbar plexus block, Labat sciatic, subgluteal sciatic
James C. Crews, M.D.

Objectives

At the conclusion of this workshop, you should be better able to describe the PNB techniques regarding: the clinical applications of site-specific regional anesthesia and pain management; the pertinent landmarks and anatomic features with the physiologic effects; and the associated techniques to minimize complications.



Luxurious Spa Treatments

AGENDA

Sunday, November 1, 2009

3:00 - 5:30 pm Registration/Conference Center Lobby
5:15 - 6:30 Welcome and Introduction - Roger L. Royster, M.D.

WFU SCHOOL OF MEDICINE SPECIAL LECTURE
Cloud-to-Ground Lightning: Its Impact on Humans
E. Philip Krider, Ph.D.

6:30 - 7:30 Reception/Oceanview Terrace
(Spouses/Guests are invited to both the Special Lecture and Reception. Dress code is resort casual.)

Monday, November 2, 2009

7:00 am Registration/Continental Breakfast

Organ-Based Evaluation and Protection

MICHAEL A. OLYMPIO, M.D., MODERATOR

8:00 - 8:35 Renal Monitoring and Interventions That Enhance Outcome
Dean R. Jones, M.D.
8:35 - 9:10 Monitoring of Neuromuscular Blockers: A Patient Safety Issue
Sorin J. Brull, M.D.
9:10 - 9:45 Hold 'Em or Fold 'Em: Preoperative Evaluation of the Cardiac Patient
Sarah G. Bodin, M.D.
9:45 - 10:00 Panel Discussion
10:00 - 10:30 Break/Visit the Exhibits

Advances in Perioperative Medicine

SARAH G. BODIN, M.D., MODERATOR

10:30 - 11:05 Perioperative Glucose Management: Where Are We Now?
Angela F. Edwards, M.D.
11:05 - 11:40 Anticoagulation Management: When Can I do a Block?
Robert S. Weller, M.D.
11:40 - 12:15 Vascular Surgical Emergencies and Their Management in the OR and ICU
Matthew S. Edwards, M.D.
12:15 - 12:45 Panel Discussion

Pearls, Pitfalls and Progress

ROGER ROYSTER, M.D., MODERATOR

5:30 - 6:05 Ultrasound-Guided Regional Anesthesia: An Evidence-Based Assessment
Joseph M. Neal, M.D.
6:05 - 6:40 Progress in Neuroanesthesia Monitoring
Michael E. Mahla, M.D.
6:40 - 7:15 Ambulatory Surgery: Quality Indicators and the Need for PNB
F. Kayser Enneking, M.D.
7:15 - 7:30 Panel Discussion

AGENDA

Tuesday, November 3, 2009

7:00 am Registration/Continental Breakfast

Issues Common to the OR and the ICU

DREW A. MACGREGOR, M.D., MODERATOR

8:00 - 8:35 New Developments in Pulse Oximetry
Steven J. Barker, Ph.D., M.D.
8:35 - 9:10 Are Large Tidal Volumes Harming Your Patient?
Bennett deBoisblanc, M.D., FACP, FCCP, FCCM
9:10 - 9:45 A Refreshing Look at Arterial Blood Gas Interpretations
Steven J. Barker, Ph.D., M.D.
9:45 - 10:00 Panel Discussion

10:00 - 10:30 Break/Visit the Exhibits

Challenges in Peripartum Anesthetic Care

KENNETH E. NELSON, M.D., MODERATOR

10:30 - 11:05 Evidence-Based Approach to the Prevention of Spinal Hypotension During Cesarean Delivery
Brendan Carvalho, MBBCh, FRCA
11:05 - 11:40 Resuscitation and Pregnancy: When Two Lives are at Risk
John A. Thomas, M.D.
11:40 - 12:15 Optimizing Labor Analgesia with PCEA
Brendan Carvalho, MBBCh, FRCA
12:15 - 12:45 Panel Discussion

WFU SCHOOL OF MEDICINE SPECIAL LECTURE
Lessons in Humanity – Surviving Hurricane Katrina
Bennett deBoisblanc, M.D., FACP, FCCP, FCCM

Wednesday, November 4, 2009

7:00 am Registration/Continental Breakfast

Pediatric Anesthesia: More Than Just a "Routine" Pediatric Case

JOSEPH R. TOBIN, M.D., MODERATOR

8:00 - 8:35 Neurotoxicity of Anesthetic Agents
Lena S. Sun, M.D.
8:35 - 9:10 Postoperative Emergencies in Children
Loren A. Bauman, M.D.
9:10 - 9:45 Surviving Childhood Diseases into Adulthood
Lena S. Sun, M.D.
9:45 - 10:00 Panel Discussion

10:00 - 10:30 Break/Visit the Exhibits

Advances in Pharmacology

JAMES C. CREWS, M.D., MODERATOR

10:30 - 11:05 Geriatric Pharmacology: Are We Overdosing Older Patients?
Raymond C. Roy, Ph.D., M.D.
11:05 - 11:40 Multimodal Non-Opioid Analgesia for the Perioperative Patient
James C. Crews, M.D.
11:40 - 12:15 Alternatives to Heparin: Next Generation Anticoagulants
Thomas F. Slaughter, M.D.
12:15 - 12:30 Panel Discussion
12:30 Adjourn

FACULTY

WFU SCHOOL OF MEDICINE ANESTHESIOLOGY FACULTY

Loren A. Bauman, M.D.
Associate Professor
Sarah G. Bodin, M.D.
Associate Professor
James C. Crews, M.D.
Associate Professor
Angela F. Edwards, M.D.
Assistant Professor
Drew A. MacGregor, M.D.
Associate Professor
Kenneth E. Nelson, M.D.
Associate Professor
Michael A. Olympio, M.D.
Professor
Raymond C. Roy, Ph.D., M.D.
Professor
Roger L. Royster, M.D.
Professor
Thomas F. Slaughter, M.D.
Professor
John A. Thomas, M.D.
Assistant Professor
Joseph R. Tobin, M.D.
Professor and Chairman
Robert S. Weller, M.D.
Professor

GUEST FACULTY

Steven J. Barker, Ph.D., M.D.
Professor and Head
Department of Anesthesiology
University of Arizona College of Medicine
Tucson, Arizona

Sorin J. Brull, M.D.
Professor of Anesthesiology
Mayo Clinic College of Medicine
Jacksonville, Florida

Brendan Carvalho, MBBCh, FRCA
Assistant Professor of Anesthesia
Stanford University School of Medicine
Stanford, California

Bennett deBoisblanc, M.D., FACP, FCCP, FCCM
Professor, Medicine and Physiology
Director, Critical Care Services
Medical Center of Louisiana
New Orleans, Louisiana

Matthew S. Edwards, M.D.
Assistant Professor of Surgery and
Public Health Sciences
Wake Forest University School of Medicine
Winston-Salem, North Carolina

F. Kayser Enneking, M.D.
Chair, Department of Anesthesiology
Professor, Department of Orthopedics
and Rehabilitation
Assistant Dean for Clinical Affairs
University of Florida College of Medicine
Gainesville, Florida

Dean R. Jones, M.D., FRCPC
Assistant Professor, Assistant Program Director,
and Director of General Surgery Division
Department of Anesthesiology
Columbia University Medical Center
New York, New York

E. Philip Krider, Ph.D.
Professor, Department of Atmospheric Sciences
& Institute of Atmospheric Physics
University of Arizona
Tucson, Arizona

Linda Le-Wendling, M.D.
Clinical Assistant Professor
University of Florida - Gainesville
Gainesville, Florida

Michael E. Mahla, M.D.
Professor of Anesthesiology and Neurosurgery
Associate Chair for Clinical Affairs
Assistant Dean for Graduate Medical Education
University of Florida College of Medicine
Gainesville, Florida

Joseph M. Neal, M.D.
Anesthesiology Faculty
Department of Anesthesiology
Virginia Mason Medical Center
Seattle, Washington

Lena S. Sun, M.D.
Professor of Anesthesiology and Pediatrics
Vice Chair, Department of Anesthesiology
Columbia University Medical Center
New York, New York

REGISTRATION AND FEES

Advances in Physiology & Pharmacology in Anesthesia and Critical Care November 1-4, 2009

Type or print clearly:

Name: _____ Degree: _____

Name badge should read: _____

*Last 4 digits of SS# _____ *AANA # _____

Institution _____ home
Preferred _____ office
Address _____

City/State/Zip _____

*E-Mail _____

Daytime Phone _____

*Required for CME credits

RATES PER PERSON (No increase from 2008!)	By Oct 16	After Oct 16
Physicians	\$535	\$585
Nurse Anesthetists and other Medical Professionals	\$485	\$535
Residents and Student Nurse Anesthetists <i>Letter from Program Director Required</i>	\$175	\$200
BLS and ACLS Workshop <i>(optional & limited to 40)</i>	\$375	\$400
If attending APPACC meeting	\$345	\$370
Peripheral Neural Blockade Workshop <i>(optional & limited to 40)</i>	\$200	\$250
Total Fee(s) Enclosed		

Credit Card # _____

Name on Card _____ AmEx MC Visa

Signature _____ Exp Date _____

Make check payable to: **WFU Health Sciences**
Mail with this form to: APPACC Meeting
Department of Anesthesiology
Medical Center Boulevard
Winston-Salem, NC 27157-1009

Phone: (336) 716-2712 Fax: (336) 716-9888

Registration and Cancellation Deadline: **October 16, 2009**

Office Use Only		
Check/Auth _____	Amt _____	Date _____